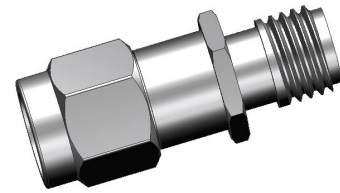


Fixed Attenuator

- ◆ DC to 18 GHz
- ◆ 6 dB
- ◆ 2 Watt
- ◆ SMA Stainless Steel Connectors



Features

- High attenuation accuracy
- Small VSWR
- Stainless Steel
- Ceramic chip
- Low cost-high performance

Specifications

Frequency Range	DC to 18 GHz
Attenuation	6 dB
Attenuation Accuracy	±0.65 dB over DC - 12GHz
Nominal Impedance	50 Ohm
Average Power	2 Watt
Operating Temperature	-55 °C to +125 °C

Model No. Description

FATXXXXXXXXM

X- Material: (no code)=Brass
 (S)=Stainless steel
X- power handling: 2W or 5W.
X- connector type: SMA, N type or
 SMB connector.

XX- attenuation: **dB.

XX- frequency range, 06: DC to 6GHz
 14: DC to 14GHz
 18: DC to 18GHz.

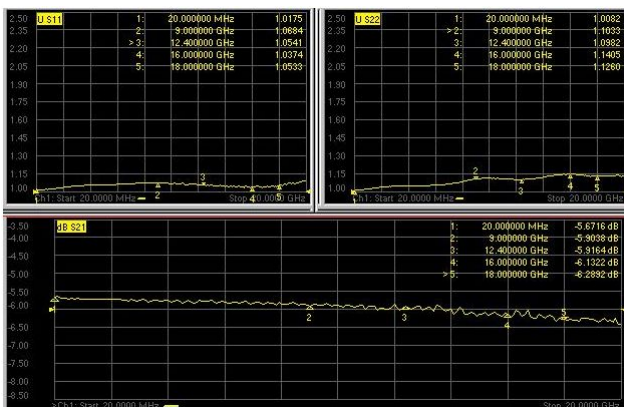
FREQ. RANGE (GHz)	Typical VSWR(:1)	Maximum VSWR(:1)
DC to 6	1.15	
6 to 12	1.25	
12 to 18	1.30	
DC to 18		1.35

Material & Plating

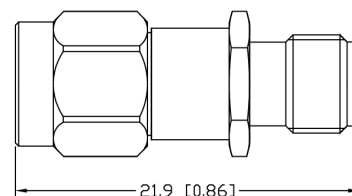
Parts	Material	Plating(Micro-inch)
Body & Nut	Stainless Steel	Passivated
Contact (female & male)	Beryllium Copper	Gold 50
	Brass	
Insulator	PTFE ASTM-D-1710	

Characteristic

For example the testing curves of FAT1806S2SM



Package Outlines



Package type: SMA

Note: all dimensions shown in mm & inch

Yantel Corporation

Add: 3F, Building 3, Southern District 2 of Zhongguan Honghualing Industrial Park, Xili, Nanshan, Shenzhen, China

Tel: 86-755-8355-1886 Fax: 86-755-8355-2533

For detailed performance specs & shopping online see Yantel web site : www.yantel-corp.com