

## Fixed Attenuator

- ◆ DC to 18 GHz
- ◆ 30 dB
- ◆ 2 Watt
- ◆ SMA Stainless Steel Connectors

### Features

- High attenuation accuracy
- Small VSWR
- Stainless Steel
- Ceramic chip
- Low cost-high performance

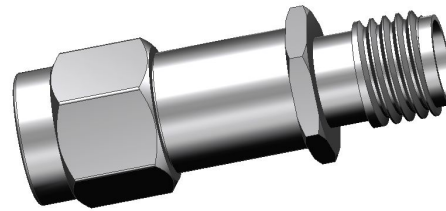
### Model No. Description

**FATXXXXXXXXM**

**X-** Material: (no code)=Brass  
 (S)=Stainless steel  
**X-** power handling: 2W or 5W.  
**X-** connector type: SMA, N type or  
 SMB connector.

**XX-** attenuation: \*\*dB.

**XX-** frequency range, 06: DC to 6GHz  
 14: DC to 14GHz  
 18: DC to 18GHz.



### Specifications

Frequency Range DC to 18 GHz  
 Attenuation 30 dB  
 Attenuation Accuracy  $\pm 1.5$  dB over DC - 18GHz

Nominal Impedance 50 Ohm  
 Average Power 2 Watt  
 Operating Temperature -55 °C to +125°C

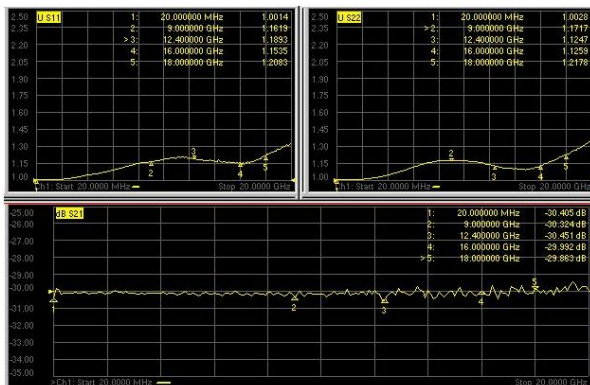
FREQ. RANGE (GHz)	Typical VSWR(:1)	Maximum VSWR(:1)
DC to 6	1.15	
6 to 12	1.25	
12 to 18	1.30	
DC to 18		1.35

### Material & Plating

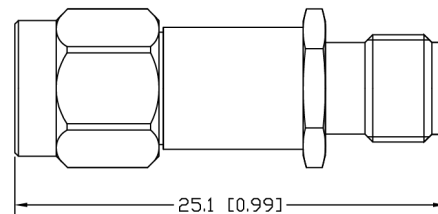
Parts	Material	Plating(Micro-inch)
Body & Nut	Stainless Steel	Passivated
Contact (female & male)	Beryllium Copper	Gold 50
	Brass	
Insulator	PTFE ASTM-D-1710	

### Characteristic

For example the testing curves of FAT1830S2SM



### Package Outlines



Package type: SMA

Note: all dimensions shown in mm & inch

Yantel Corporation

Add: 3F, Building 3, Southern District 2 of Zhongguan Honghualing Industrial Park, Xili, Nanshan, Shenzhen, China

Tel: 86-755-8355-1886 Fax: 86-755-8355-2533

For detailed performance specs & shopping online see Yantel web site : [www.yantel-corp.com](http://www.yantel-corp.com)