

Fixed Attenuator

DC to 6 GHz
6 dB
2 Watt
SMA Stainless Steel Connectors

Features

- High attenuation accuracy
- Small VSWR
- Stainless Steel
- Ceramic chip
- Low cost-high performance

Model No. Description

FATXXXXXXXX

X- Material: (no code)=Brass
 (S)=Stainless steel
 X- power handling: 2W or 5W.
 X- connector type: SMA, N type or SMB connector.
 XX- attenuation: **dB.
 XX- 06 represents type number.

Specifications

| | |
|-------------------------------|---|
| Frequency Range | DC to 6 GHz |
| Attenuation | 6 dB |
| Attenuation Accuracy (Max.) | ± 0.2 dB over DC - 3 GHz ± 0.2 dB over 3 - 4GHz ± 0.3 dB over 4 - 6 GHz |
| Nominal Impedance | 50 Ohm |
| Average Power | 2 Watt |
| Operating Temperature | -55 to +125 |
| Storage Temperature | -55 to +125 |

Note:

AVERAGE POWER: 2W average to 25°C to 85°C ambient temperature, derated linearly to 0.2W @ 125°C.

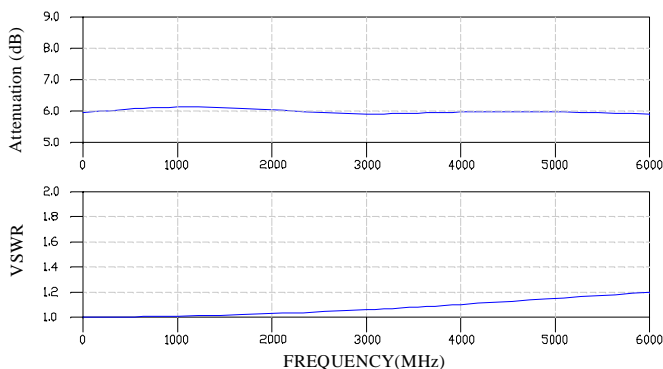
| FREQ. RANGE (GHz) | Typical VSWR(:1) | Maximum VSWR(:1) |
|-------------------|------------------|------------------|
| DC to 3 | 1.10 | |
| 3 to 4 | 1.15 | |
| 4 to 6 | 1.20 | |
| DC to 6 | | 1.25 |

Material & Plating

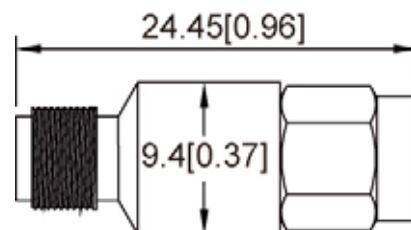
| Parts | Material | Plating(Micro-inch) |
|-------------------------|------------------|---------------------|
| Body & Nut | Stainless Steel | Passivated |
| Contact (female & male) | Beryllium Copper | Gold 30 |
| Insulator | Teflon | |

Characteristic

For example the testing curves of FAT0606S2S



Package Outlines



Package type: SMA

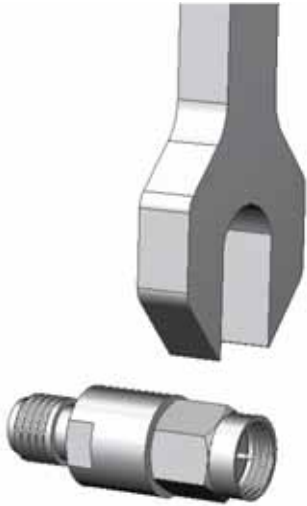
Note: all dimensions shown in mm & inch

Yantel Corporation

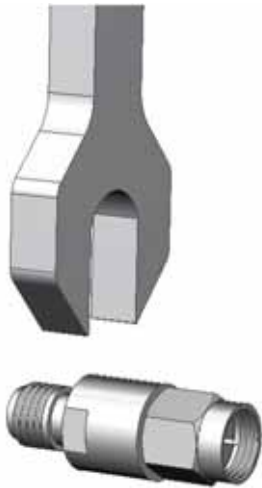
Add : 3F, Building 3, Southern District 2 of Zhongguan Honghualing Industrial Park, Xili, Nanshan, Shenzhen, China
 Tel : 86-755-8355-1886 Fax : 86-755-8355-2533

For detailed performance specs & shopping online see Yantel web site : www.yantel-corp.com

Attention



Screw the male of connector to connect/disconnect.



Don't screw the slot of body to connect/disconnect.