

### Fixed Attenuator

- ◆ DC to 6 GHz
- ◆ 10 dB
- ◆ 2 Watt
- ◆ SMA Stainless Steel Connectors

### Features

- High attenuation accuracy
- Small VSWR
- Stainless Steel
- Ceramic chip
- Low cost-high performance

### Specifications

|                             |                         |
|-----------------------------|-------------------------|
| Frequency Range             | DC to 6 GHz             |
| Attenuation                 | 10 dB                   |
| Attenuation Accuracy (Max.) | ±0.6 dB over DC – 6 GHz |

|                       |                  |
|-----------------------|------------------|
| Nominal Impedance     | 50 Ohm           |
| Average Power         | 2 Watt           |
| Operating Temperature | -55 °C to +125°C |
| Storage Temperature   | -55 °C to +125°C |

### Model No. Description

FATXXXXXX

- X- Material: (no code)=Brass  
(S)=Stainless steel
- X- power handling: 2W or 5W.
- X- connector type: SMA, N type or SMB connector.
- XX- attenuation: \*\*dB.
- XX- 06 represents type number.

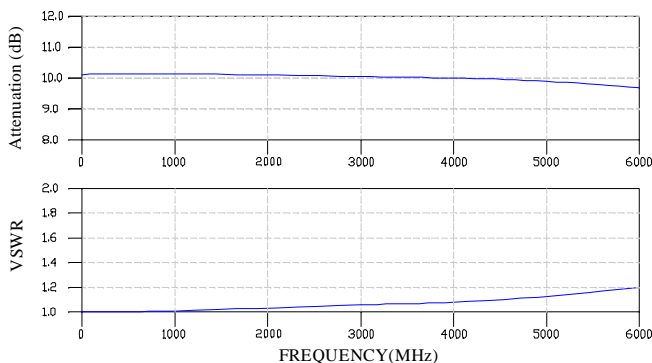
| FREQ. RANGE (GHz) | Typical VSWR(:1) | Maximum VSWR(:1) |
|-------------------|------------------|------------------|
| DC to 3           | 1.10             |                  |
| 3 to 4            | 1.15             |                  |
| 4 to 6            | 1.20             |                  |
| DC to 6           |                  | 1.30             |

### Material & Plating

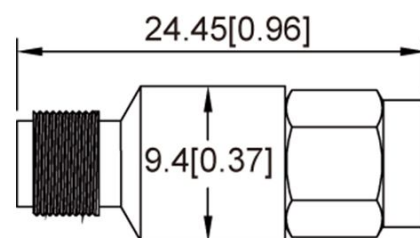
| Parts                   | Material         | Plating(Micro-inch) |
|-------------------------|------------------|---------------------|
| Body & Nut              | Stainless Steel  | Passivated          |
| Contact (female & male) | Beryllium Copper | Gold 30             |
| Insulator               | Teflon           |                     |

### Characteristic

For example the testing curves of FAT0610S2S



### Package Outlines



Package type: SMA

Note: all dimensions shown in mm & inch

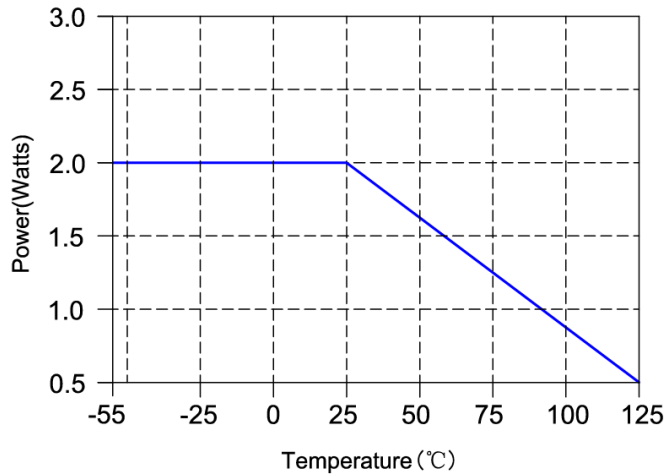
### Yantel Corporation

Add: 3F, Building 3, Southern District 2 of Zhongguan Honghualing Industrial Park, Xili, Nanshan, Shenzhen, China  
Tel: 86-755-8355-1886 Fax: 86-755-8355-2533

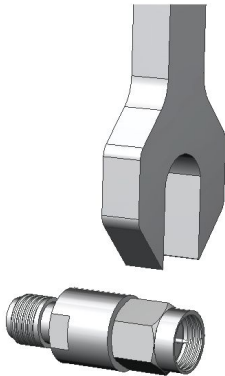
For detailed performance specs & shopping online see Yantel web site : [www.yantel-corp.com](http://www.yantel-corp.com)

**Note:**

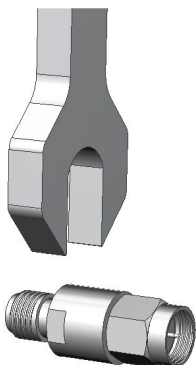
Average power at 25°C ambient, derate linearly to 0.5W at 125°C



## Attention



Screw the male of connector to connect/disconnect.



Don't screw the slot of body to connect/disconnect.