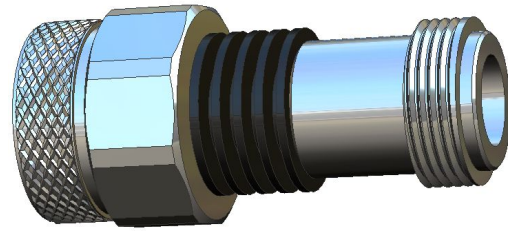


Fixed Attenuator

- ◆ DC to 18 GHz
- ◆ 8 dB
- ◆ 5 Watt
- ◆ N type Stainless Steel Connectors



Features

- High attenuation accuracy
- Small VSWR
- Stainless Steel
- Ceramic chip
- Low cost-high performance

Specifications

Frequency Range	DC to 18 GHz
Attenuation	8 dB
Attenuation Accuracy	±0.8 dB over DC - 18GHz
Nominal Impedance	50 Ohm
Average Power	5 Watt
Operating Temperature	-55 °C to +125°C
Storage Temperature	-55 °C to +125°C

Model No. Description

FATXXXXXX

X- Material: (no code)=Brass
(S)=Stainless steel
X- power handling: 2W or 5W.
X- connector type: SMA, N type or SMB connector.

XX- attenuation: **dB.

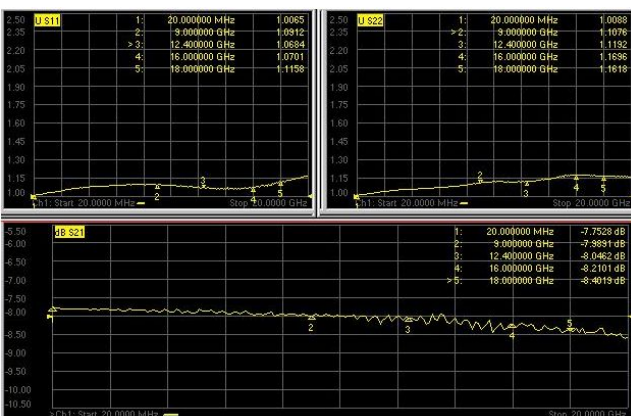
XX- 18 represents type number

Material & Plating

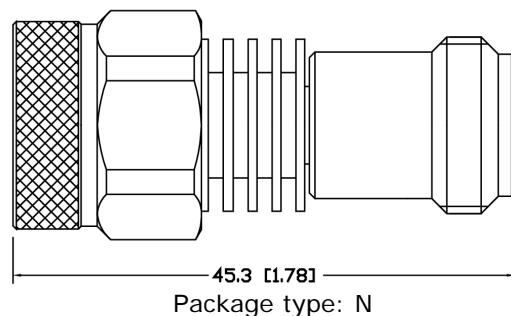
Parts	Material	Plating(Micro-inch)
Nut	stainless steel N male and female connectors	Passivated
Contact (female & male)	Beryllium Copper	Gold 50
	Brass	
Insulator	PTFE ASTM-D-1710	N/A
Body & Heat Sink	Al	Black anodize

Characteristic

For example the testing curves of FAT1808N5S



Package Outlines



Note: all dimensions shown in mm & inch

Yantel Corporation

Add: 3F, Building 3, Southern District 2 of Zhongguan Honghualing Industrial Park, Xili, Nanshan, Shenzhen, China

Tel: 86-755-8355-1886 Fax: 86-755-8355-2533

For detailed performance specs & shopping online see Yantel web site : www.yantel-corp.com

Note:

Average power at 25°C ambient, derate linearly
to 0.5W at 125°C

