

Data Sheet

DC626IC10Q

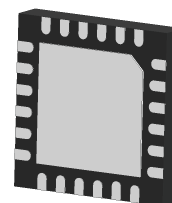
Directional Coupler

6 GHz-18 GHz



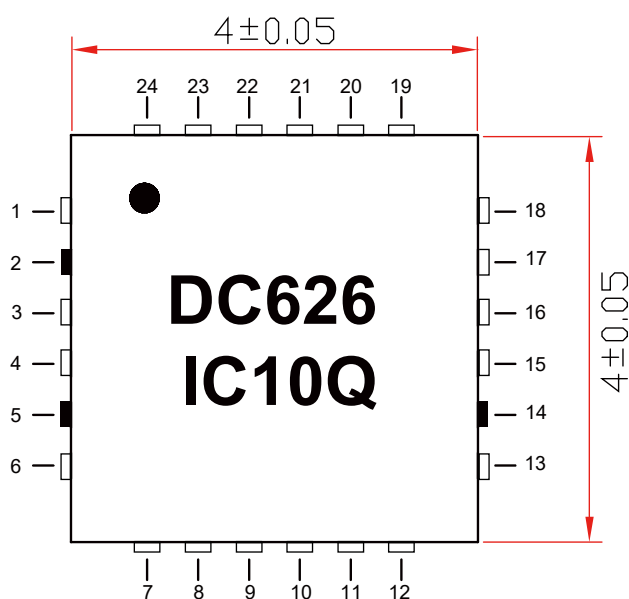
Features

- Very Low Loss
- Wideband, 6 to 18 GHz
- Excellent coupling flatness 10±1.5 dB typ.
- Highly repeatable performance (GaAs based design)



Applications

- Satellite communications
- Wireless infrastructure
- Test and measurements



TOP VIEW

Notes:

- 1.Require to add Capacitors of DC Blocker between Pins(with black color) and external circuit to prevent DC signal entry to guranteeparts normal work.
- 2.This part has passed through 100% RF test.

Yantel Corporation

Add: No.308-322, 3F, Building 1, Juchuang Jingu Innovation Park, Wenyuan Road 35, Xili Street, Nanshan, Shenzhen, China
Tel: 86-755-8355-1886 Fax: 86-755-8355-2533

Data Sheet

DC626IC10Q

Directional Coupler

6 GHz-18 GHz



Electrical Specifications at 25°C

Parameter	Frequency (MHz)	Min.	Typ.	Max.	Unit
Frequency Range		6000		18000	MHz
Mainline Loss	6000 - 10000	—	1.0	2.2	dB
	10000 - 14000	—	1.3	2.3	
	14000 - 16000	—	1.4	2.3	
	16000 - 18000	—	1.5	2.3	
Nominal Coupling	6000 - 10000	9.2	10.3	12.5	dB
	10000 - 14000	9.5	10.0	11.7	
	14000 - 16000	9.7	10.5	11.7	
	16000 - 18000	9.8	10.8	11.9	
Coupling Flatness(±)	6000 - 18000	—	0.7	—	dB
Directivity	6000 - 10000	10	16	—	dB
	10000 - 14000	10	16	—	
	14000 - 16000	8.5	12	—	
	16000 - 18000	8.9	18	—	
Return Loss (Input)	6000 - 10000		24		dB
	10000 - 14000		18		
	14000 - 16000		15		
	16000 - 18000		15		
Return Loss (Output)	6000 - 10000		22		dB
	10000 - 14000		17		
	14000 - 16000		12		
	16000 - 18000		18		
Return Loss (Coupled)	6000 - 10000		24		dB
	10000 - 14000		17		
	14000 - 16000		14		
	16000 - 18000		14		

Yantel Corporation

Add: No.308-322, 3F, Building 1, Juchuang Jingu Innovation Park, Wenyuan Road 35, Xili Street, Nanshan, Shenzhen, China
 Tel: 86-755-8355-1886 Fax: 86-755-8355-2533

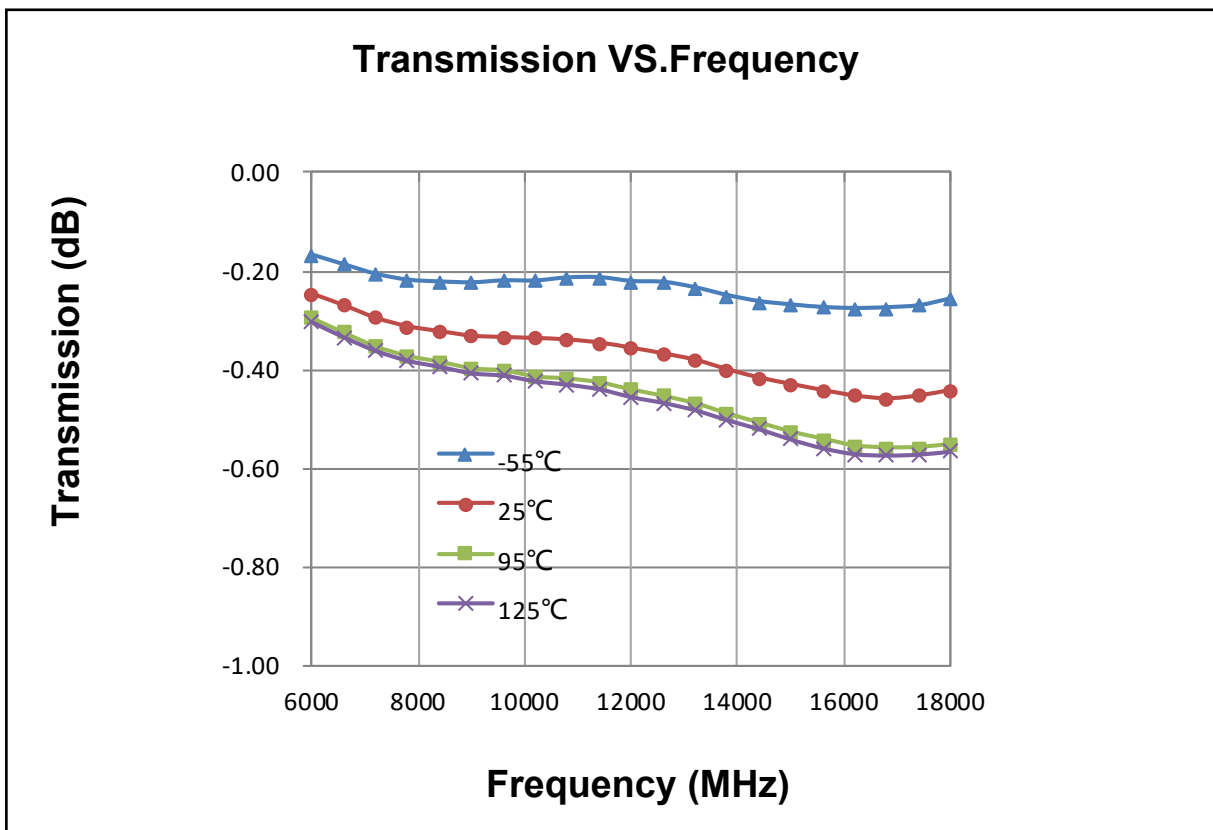
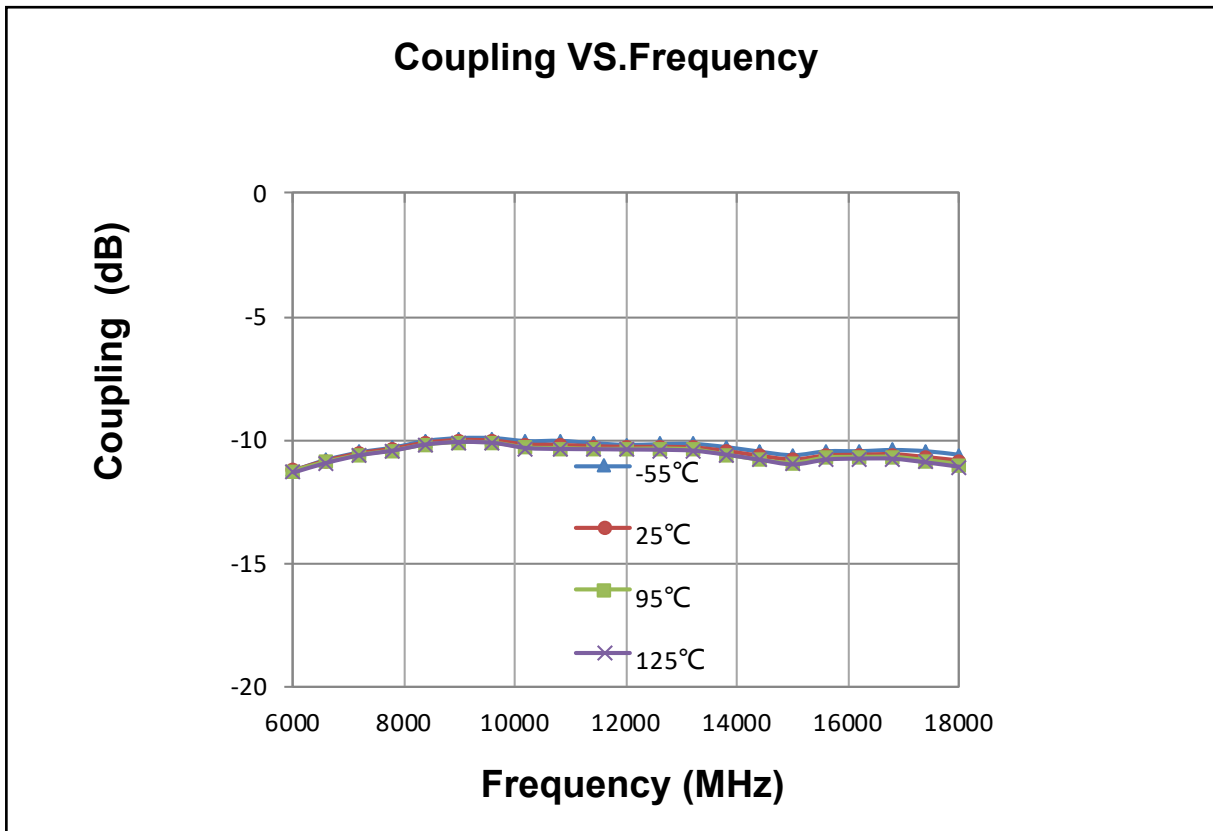
Rev A1

For detailed performance specs & shopping online see Yantel web site : www.yantel-corp.com

Data Sheet

DC626IC10Q

Directional Coupler
6 GHz-18 GHz



Yantel Corporation

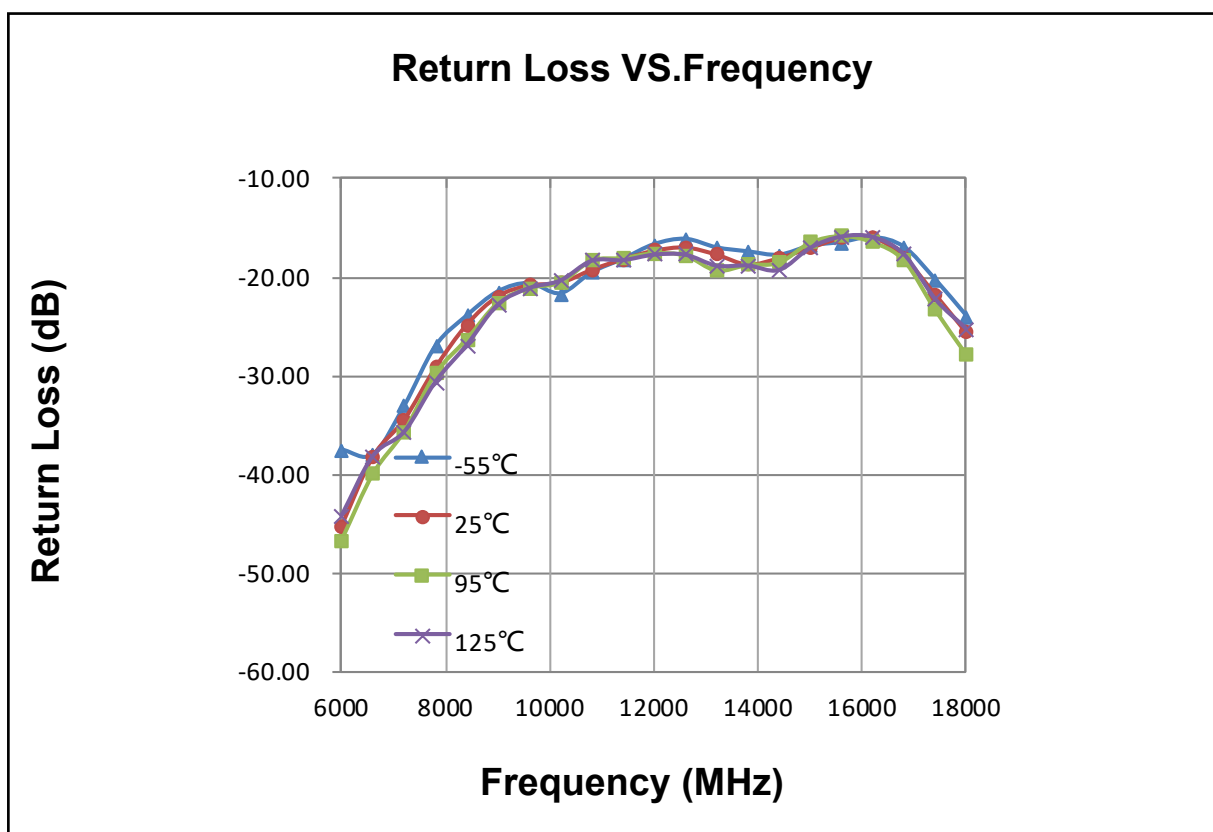
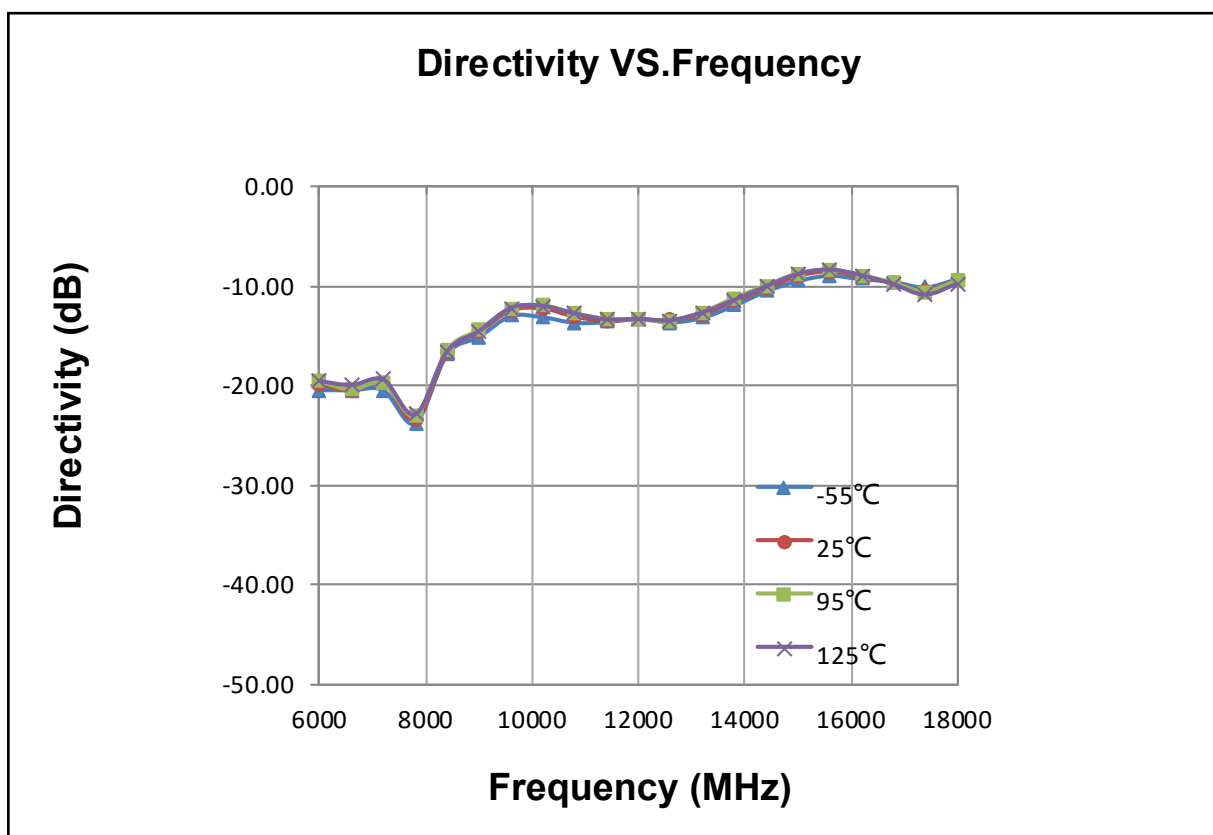
Add: No.308-322, 3F, Building 1, Juchuang Jingu Innovation Park, Wenyuan Road 35, Xili Street, Nanshan, Shenzhen, China
Tel: 86-755-8355-1886 Fax: 86-755-8355-2533

Data Sheet

DC626IC10Q

Directional Coupler

6 GHz-18 GHz



Yantel Corporation

Add: No.308-322, 3F, Building 1, Juchuang Jingu Innovation Park, Wenyuan Road 35, Xili Street, Nanshan, Shenzhen, China
 Tel: 86-755-8355-1886 Fax: 86-755-8355-2533

Data Sheet

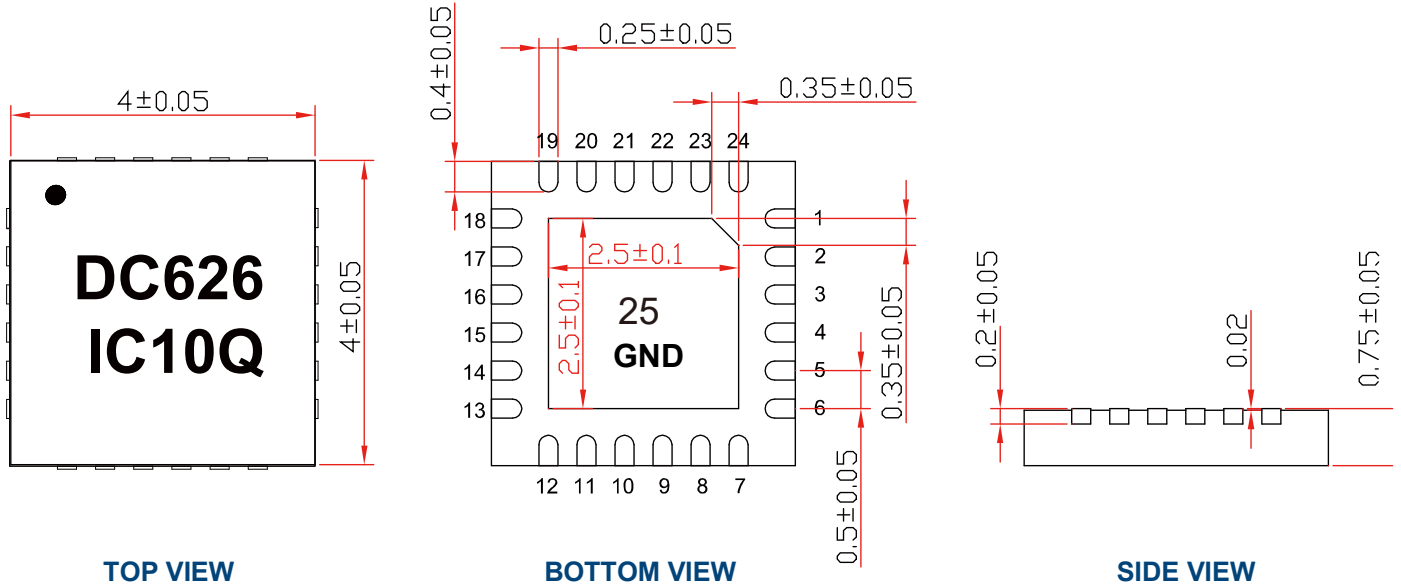
DC626IC10Q

Directional Coupler

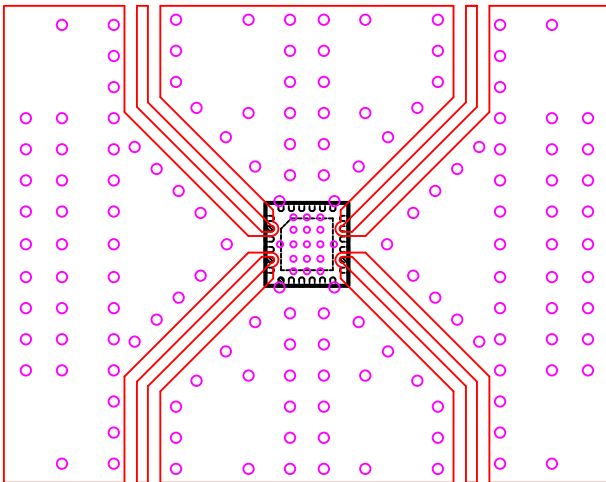
6 GHz-18 GHz



Outline Drawing units:mm



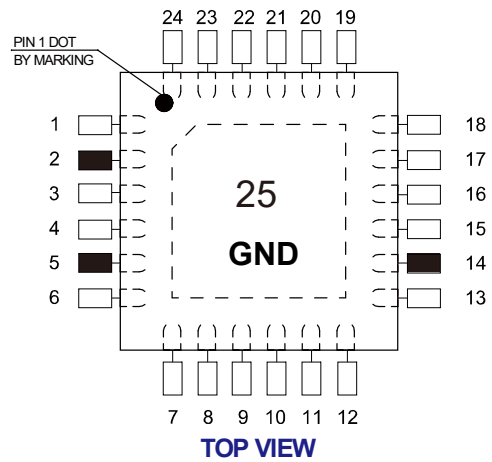
Land Pattern



NOTE:

1. 50Ω line width is shown above designing from RO4350B dielectric thickness 0.254mm; copper 1/2 OZ
2. Bottom side of the PCB is continuous ground plane.
3. All dimensions shown in mm.

Pin Out



Notes:

1. Require to add Capacitors of DC Blocker between Pins(with black color) and external circuit to prevent DC signal entry to guarantee parts normal work.
2. This part has passed through 100% RF test.

Function	Pad Number		
INPUT	5	14	2
COUPLED	2		5
OUTPUT	14	5	
ISO		2	14
GROUND	Paddle 25		
NC (GROUND EXTERNALLY)	1,3,4,6-13,15,16,17~24		

Yantel Corporation

Add: No.308-322, 3F, Building 1, Juchuang Jingu Innovation Park, Wenyuan Road 35, Xili Street, Nanshan, Shenzhen, China
 Tel: 86-755-8355-1886 Fax: 86-755-8355-2533